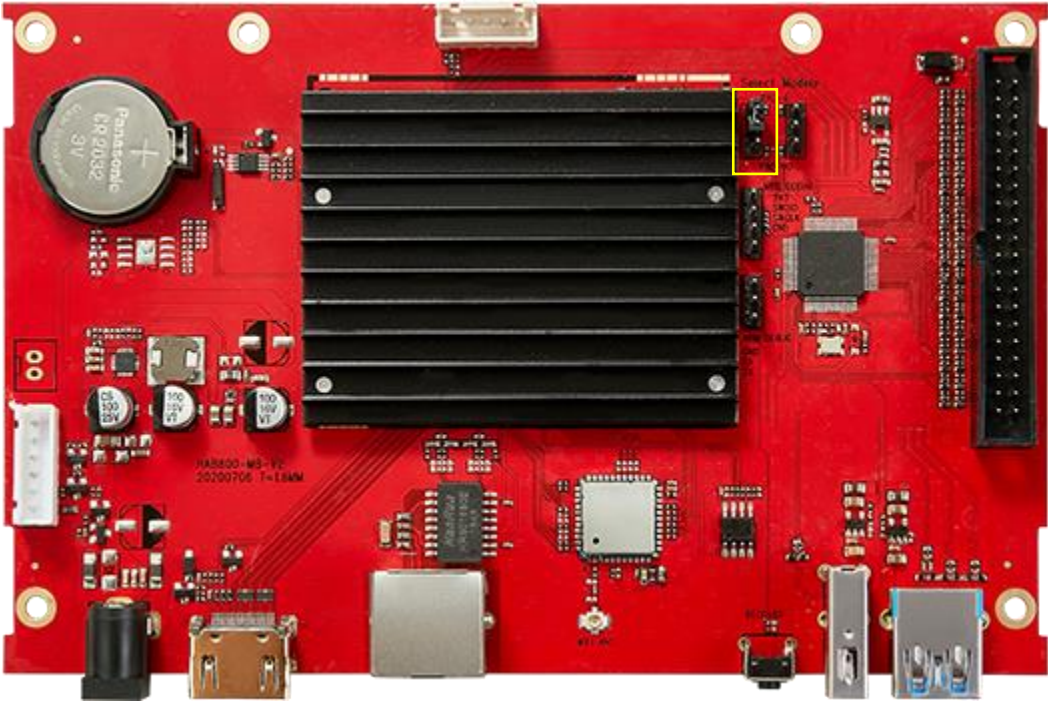


Legends Connect AN-101: Pandora's Box Compatibility

Updated: 2020-09-29

Control Switch



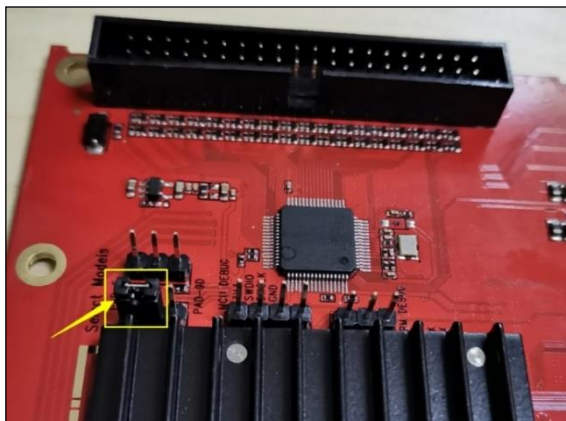
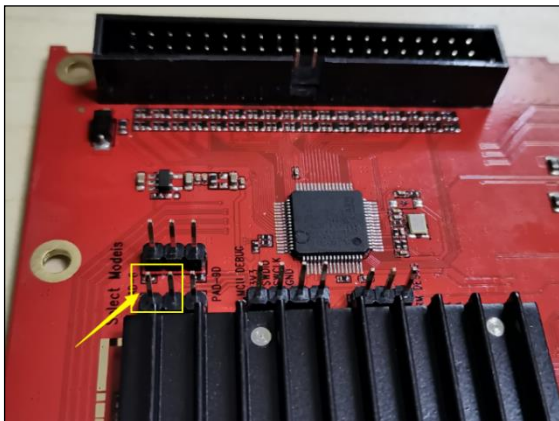
| | |
|---|------------|
| 1 | Pandora 6 |
| 2 | GPIO PC11 |
| 3 | Pandora 9D |

Support List

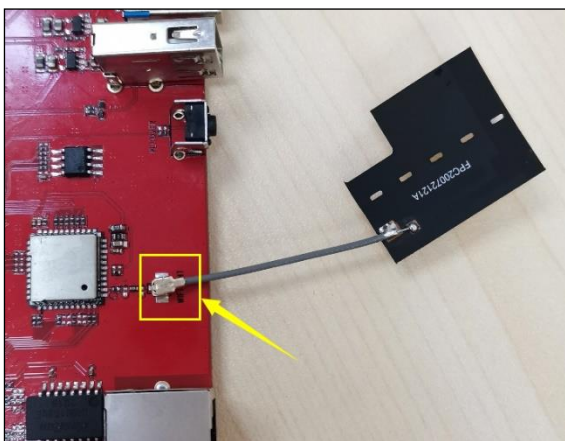
- Pandora's Box 6 Arcade
- Pandora's Box 9D Arcade
- Pandora’s Box 9D (Wireless)

Pandora's Box 6 Arcade Assembly Steps

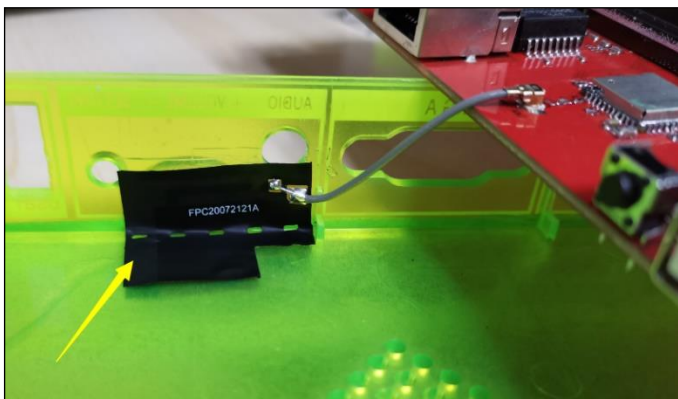
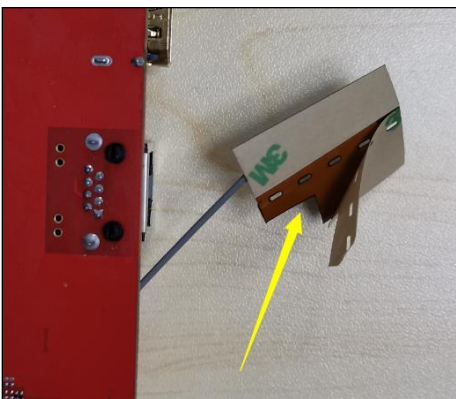
1. Use a Jumper Cap to connect pin 1 and pin 2.



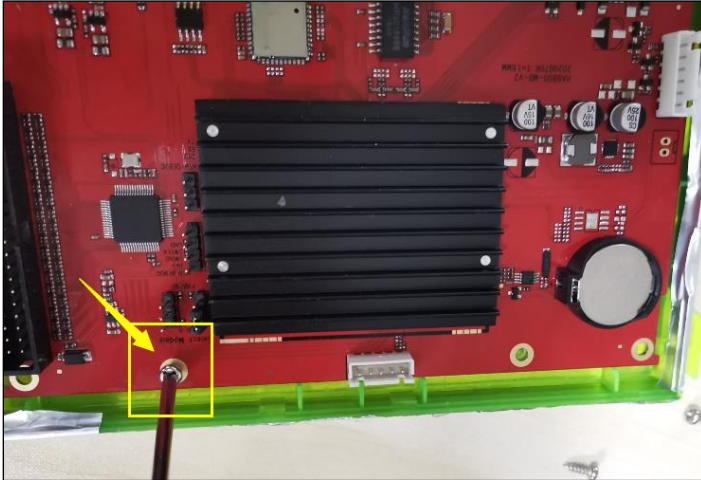
2. Connect the Wi-Fi antenna to the mainboard.



3. Remove the antenna sticker backing and attach the antenna to the green box.



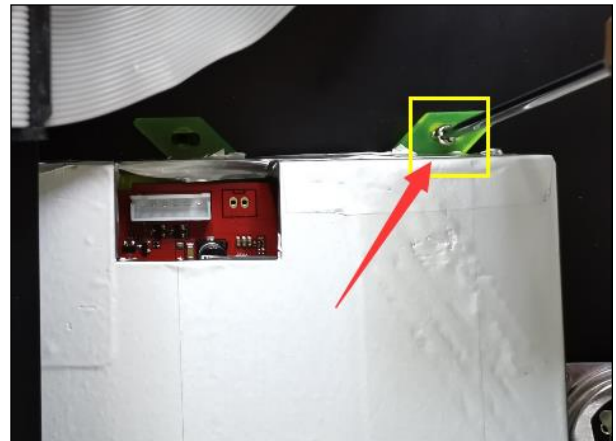
4. Tighten the screw on the mainboard.



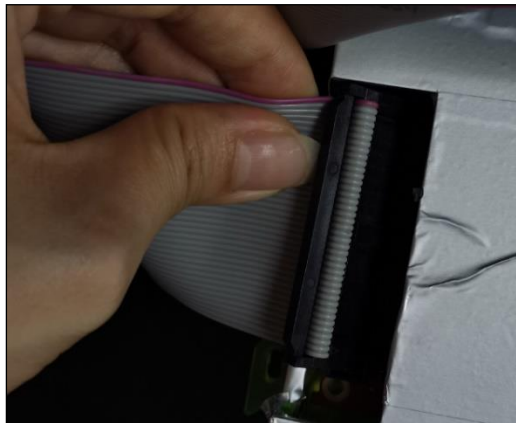
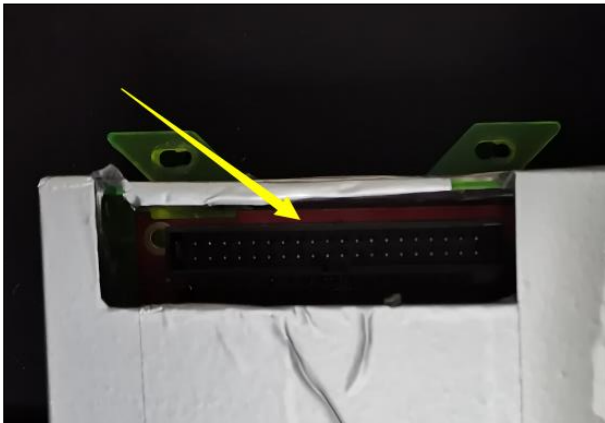
5. Assemble the green box.



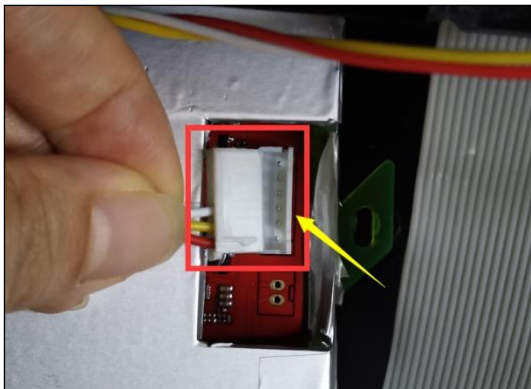
6. Use the screw to attach the green box to the Pandora's Box 6 arcade.



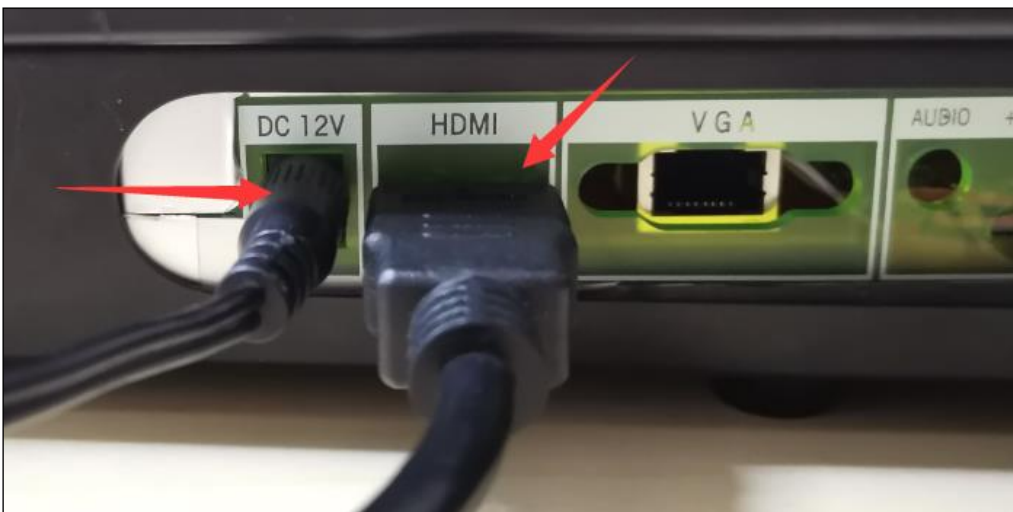
7. Plug the 40 pin cable into the mainboard.



8. Plug the power control cable into the mainboard.

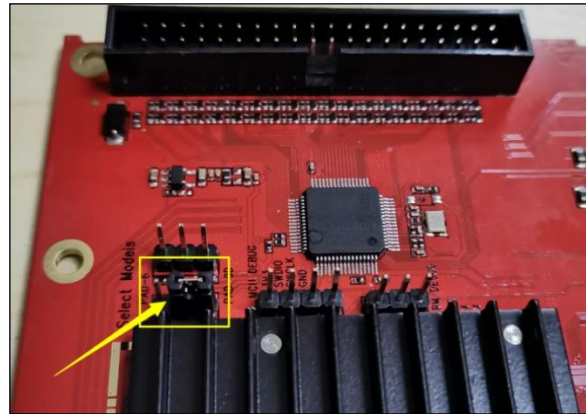
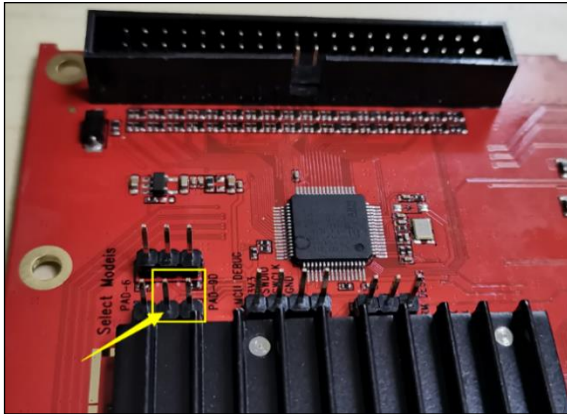


9. After all cables are connected, plug in the HDMI and power supply cables, then power on your Pandora's Box 6 arcade. °

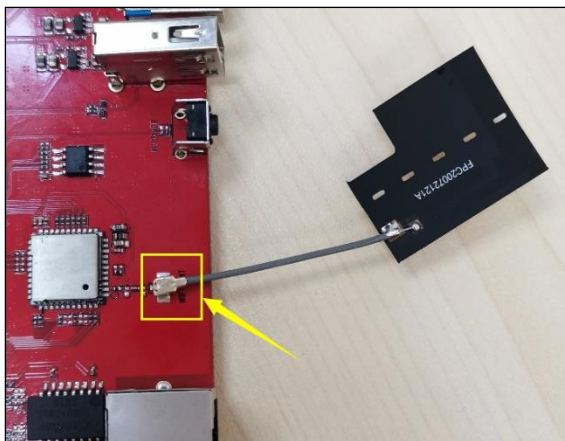


Pandora's Box 9D Arcade Assembly Steps

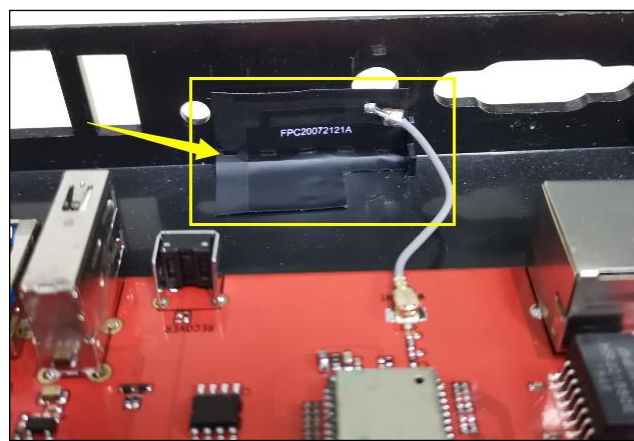
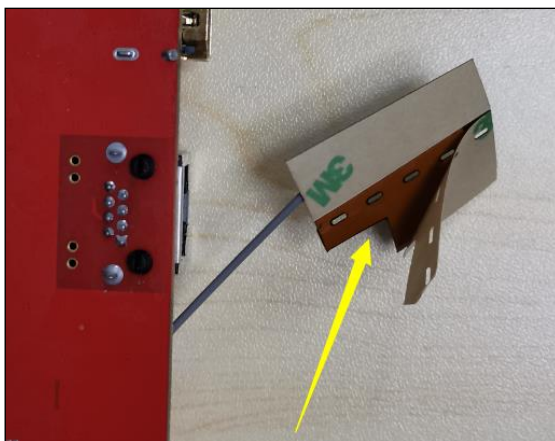
1. Use a Jumper Cap to connect pin 2 and pin 3.



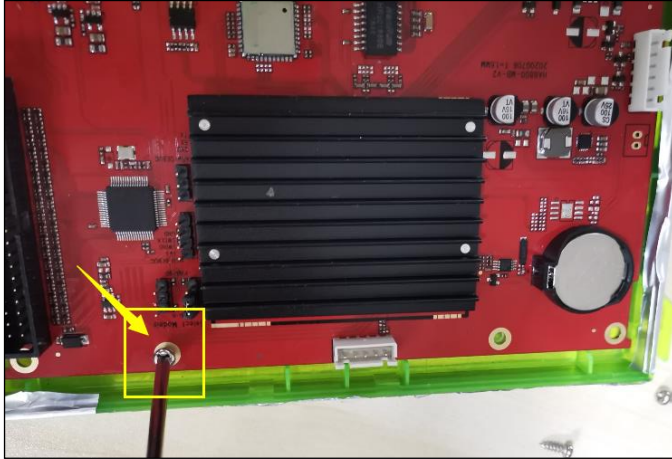
2. Connect the Wi-Fi antenna to the mainboard.



3. Remove the antenna sticker backing and attach the antenna to the black box.



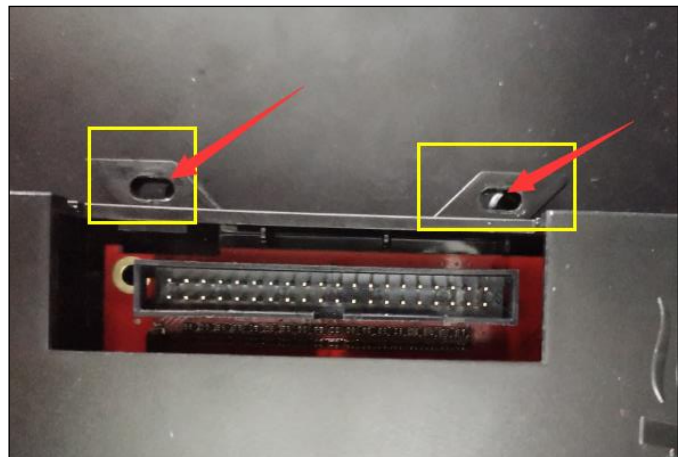
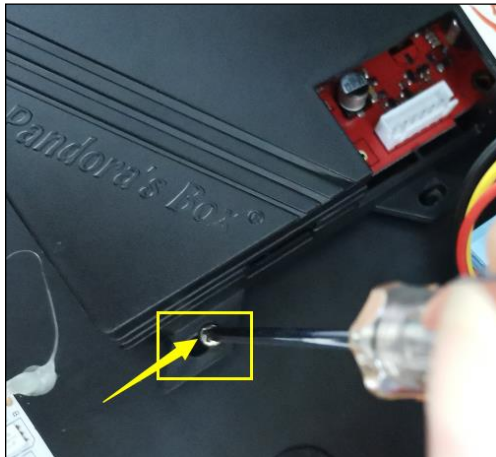
4. Tighten the screw onto the mainboard.



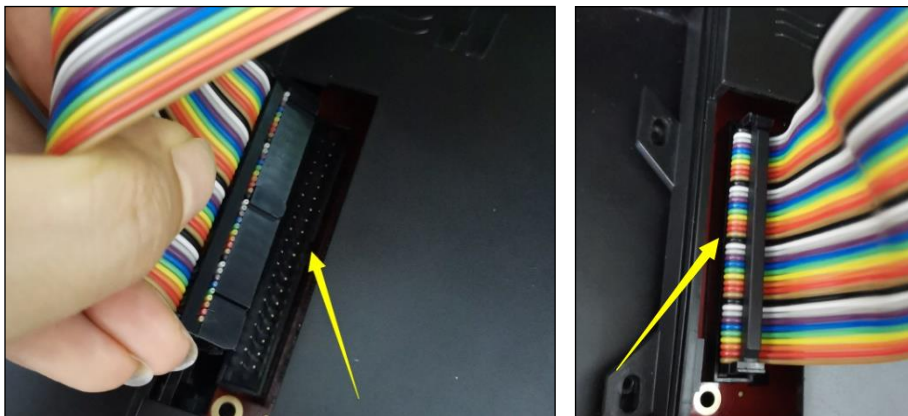
5. Assemble the black box.



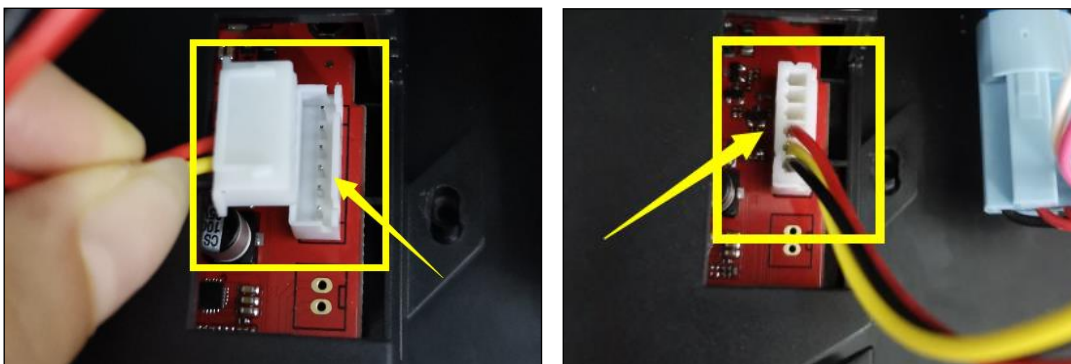
6. Use the screws to attach the black box to the Pandora's Box 9D arcade.



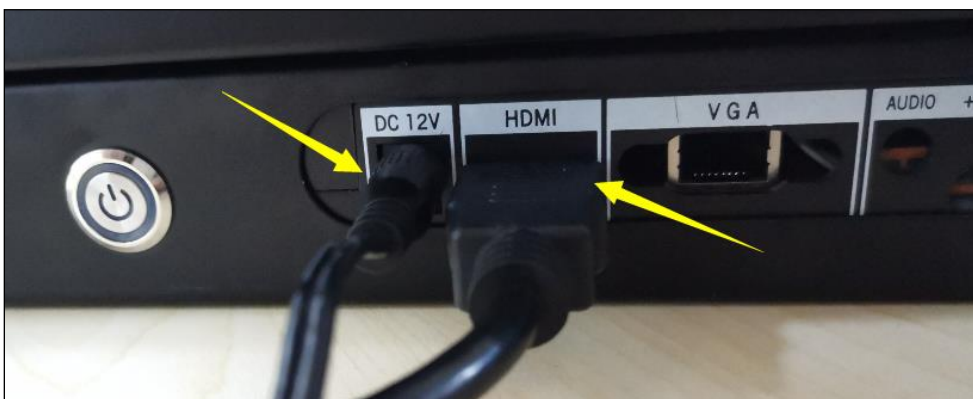
7. Connect the 40 pin cable to the mainboard.



8. Connect the power control cable to the mainboard.

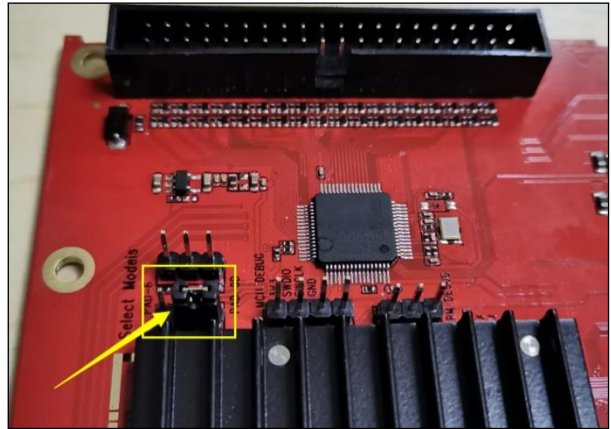
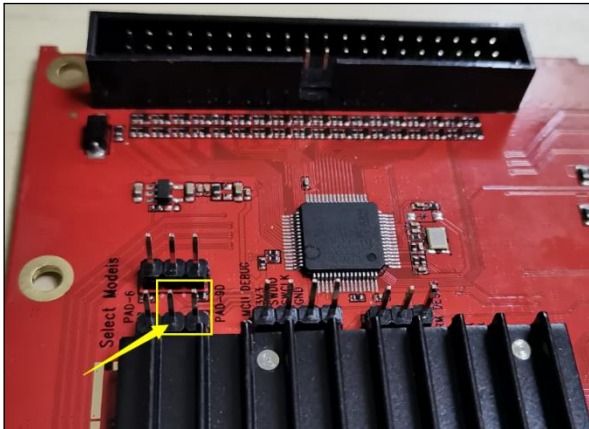


9. After all cables are connected, plug in the HDMI and power supply cables, then power on your Pandora's Box 9D arcade.

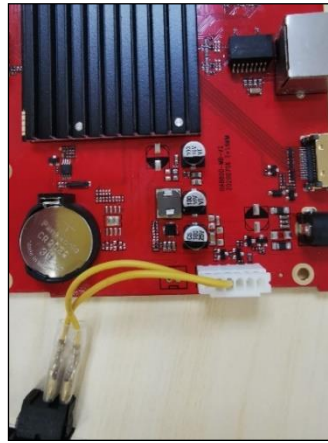
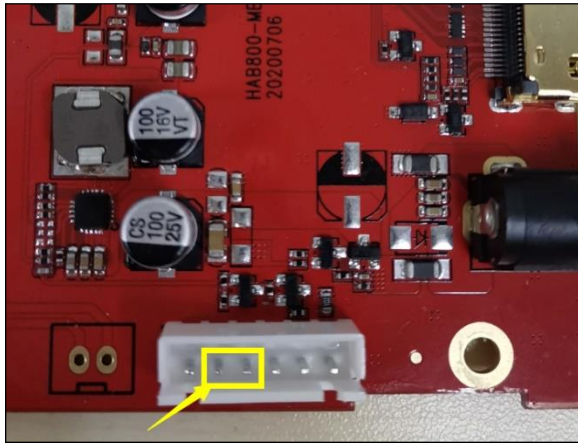


Pandora's Box 9D (Wireless) Assembly Steps

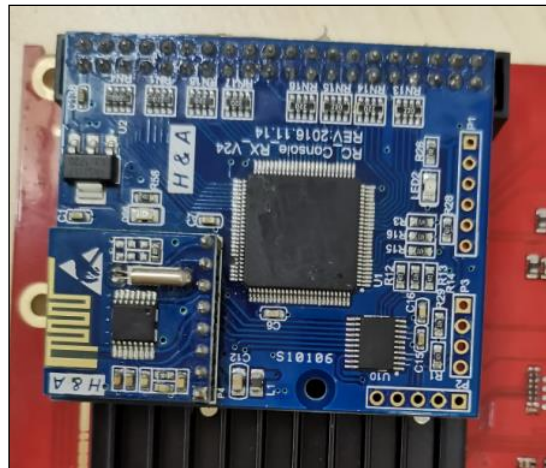
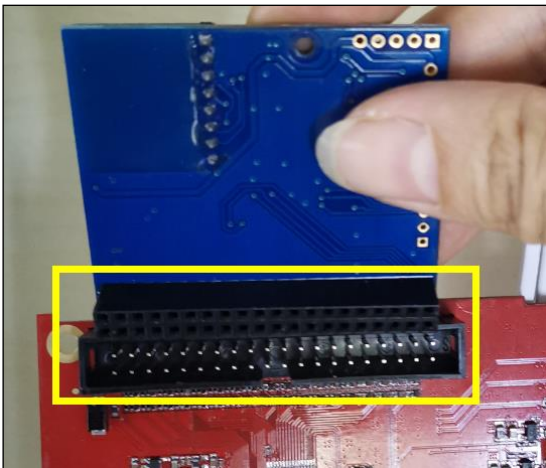
1. Use a Jumper Cap to connect pin 2 and pin 3.



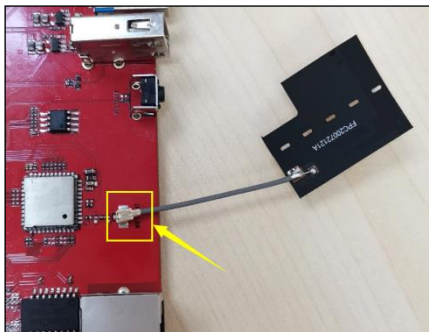
2. Connect the power switch cable to the mainboard.



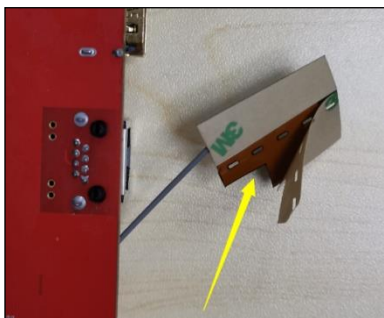
3. Install the RC Console board onto the mainboard (pay attention to the pin direction).



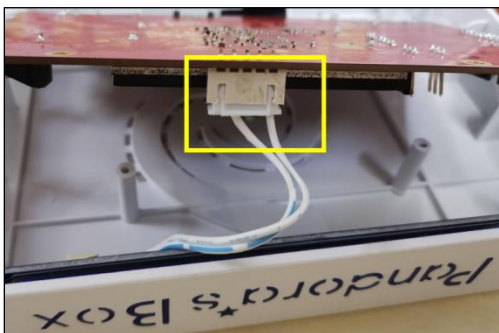
4. Connect the Wi-Fi antenna to the mainboard.



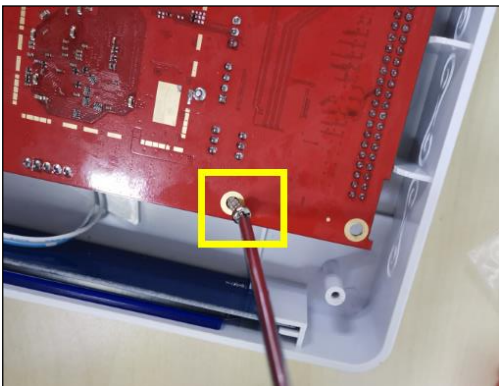
5. Remove the antenna sticker backing and attach the antenna to the box.



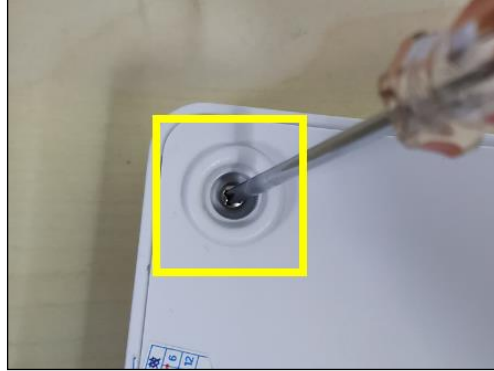
6. Plug the LED cable into the mainboard.



7. Tighten the screw on the mainboard.



8. Assemble the box.



9. After all cables are connected, plug in the HDMI and power supply cables, then power on your Pandora's Box 9D.

